

AT&T Velocity 2



Let's get started



AT&T Eco Rating 2.0 only applies to this device. For limited factors evaluated visit [att.com/EcoSpace](http://att.com/EcoSpace).

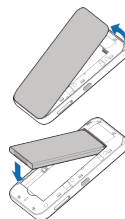
LTE is a trademark of ETSI. 4G LTE not avail. everywhere. Contains Lithium ion battery - recycle or dispose of properly. ©2018 AT&T Intellectual Property. All rights reserved. AT&T, the AT&T logo and all other AT&T marks contained herein are trademarks of AT&T Intellectual Property. All other marks are the property of their respective owners.

081704100777

## Set Up Your Velocity 2

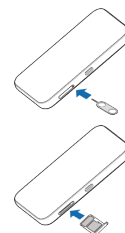
### Install the Battery

1. Remove the back cover.
2. Insert the battery.
3. Replace the back cover.



### Insert a microSDXC™ Card (optional)

1. Insert the tip of the tray eject tool into the hole next to the card tray.
2. Pull out the card tray. Place the microSDXC card on the tray, as shown. Carefully slide the tray back into place.



### Charge the Battery

The battery is precharged. To recharge, attach the USB Type-C™ cable to your Velocity 2 and connect it to either:

- A wall socket, using the wall charger (fastest option), or
- The USB port on your laptop.



#### Notes:

- Supports up to a 128 GB microSDXC card.
- The SIM card is preinstalled in your Velocity 2.

## File Sharing

If a microSDXC card is inserted in your Velocity 2, you can share files on it via Wi-Fi or USB connection.

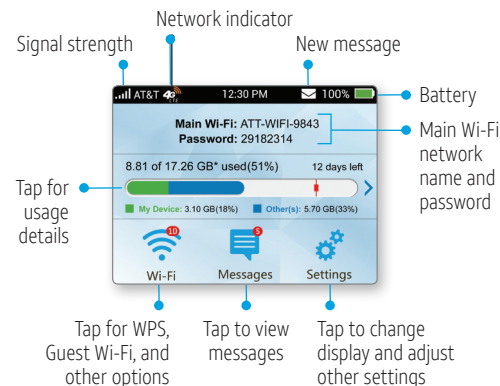
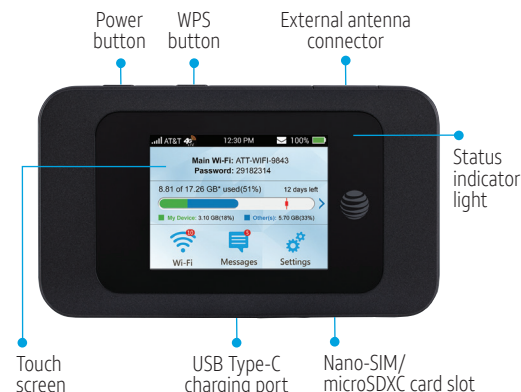
### Share Files via Wi-Fi

1. From the AT&T Wi-Fi Manager, click **File Sharing** in the navigation menu.
2. Click **Settings > Wi-Fi Only**.
3. Click **Apply**.
4. Click **File Browser** to access files on the microSDXC card.

### Share Files via USB

1. From the AT&T Wi-Fi Manager, click **File Sharing** in the navigation menu.
2. Click **Settings > USB Only**.
3. Click **Apply**. You must connect your Velocity 2 via USB to access files.

**Note:** To change sharing mode from the home screen of your Velocity 2, tap **Settings > File Sharing > Share Mode** and select an option.



## Get Help

Email us at [support@sim-usa.mobi](mailto:support@sim-usa.mobi) or online <https://support.sim-usa.mobi>



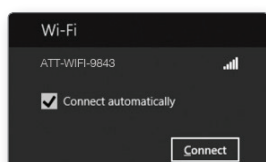
## Connect to the Internet

### Turn On Your Velocity 2

Press and hold the **Power** button for 2 seconds.

### Connect Your Laptop or Other Wi-Fi Devices

1. Find your hotspot's network name in your device's list of available wireless networks.
2. Select the Wi-Fi network name (e.g., ATT-WIFI-XXXX), and then select **Connect** or **Join** (may vary by device).



3. Input the Wi-Fi network password.
4. Launch your browser.

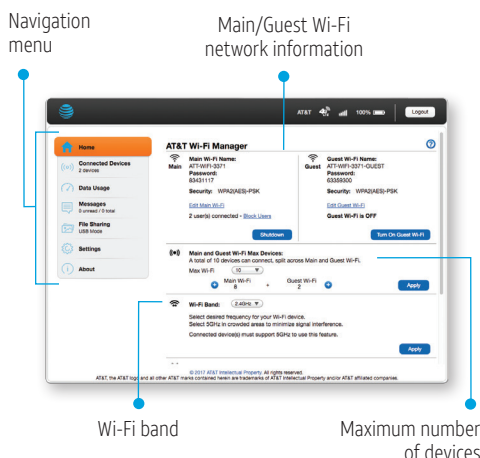
#### Notes:

- The home screen of your Velocity 2 displays the Wi-Fi network name and password.
- If needed, press the **Power** button to wake your Velocity 2, and then press and hold the unlock icon.

## AT&T Wi-Fi Manager

Change advanced settings, such as the Wi-Fi network name and password, the maximum number of devices, and more, using the AT&T Wi-Fi Manager.

1. On a connected device, open a browser and enter **http://attwifimanager** or **http://192.168.1.1** in the address field to go to the AT&T Wi-Fi Manager.
2. Enter the login. (The default login is **attadmin**.)



## Change the Wi-Fi® Network Name and Password

1. From the AT&T Wi-Fi Manager, click **Settings** in the navigation menu.
2. In the **Main Wi-Fi Network** or **Guest Wi-Fi SSID** section, click on the **Network Name (SSID)** or **Password** field and enter the new information.
3. Click **Apply**.

Note: If you change the network name or password, you will need to reconnect your other devices to the mobile hotspot.

## Guest Wi-Fi

Provide one-time access to your mobile hotspot with a second (Guest) network and password.

1. From the home screen of your Velocity 2, tap **Wi-Fi** > **Guest Wi-Fi Network** > **Turn On**.
2. The current (default) Guest Wi-Fi network name and password appear. Tap **OK**.

Users can now connect using the Guest Wi-Fi network name and password.



Tap to view Guest Wi-Fi network name and password

#### Notes:

- A maximum of ten devices total (split between the Main and Guest Wi-Fi networks) can be connected simultaneously to your mobile hotspot.
- The Guest Wi-Fi network is turned off when your Velocity 2 is restarted.

## Connect WPS Devices

Use Wi-Fi Protected Setup (WPS) to connect WPS-enabled devices without entering the Wi-Fi password.

1. Press and hold the **WPS** button on the top of your Velocity 2.
2. Tap **Pair with Main Wi-Fi**.
3. Press the **WPS** button on the wireless device that you want to connect to the mobile hotspot.

Your Velocity 2 and the wireless device will find each other and pair.

## Block/Unblock Devices

To prevent a device from connecting to the mobile hotspot, you can add it to the hotspot's blocked list. You can unblock the device at any time.

### Block Devices

1. From the home screen of your Velocity 2, tap **Wi-Fi** > **Connected Devices**.
2. Tap the name of the device you want to block. (You may need to scroll down to find it if there are many devices connected.)
3. Tap **Block**.
4. Tap **OK** to confirm.

### Unblock Devices

1. From the home screen of your Velocity 2, tap **Wi-Fi** > **Connected Devices** > **Block List**.
2. Locate the name of the device, and tap **Unblock**.
3. Tap **OK** to confirm.